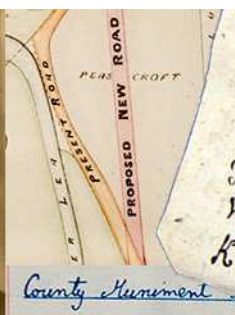


Help us celebrate our Centenary Year!



Resolved

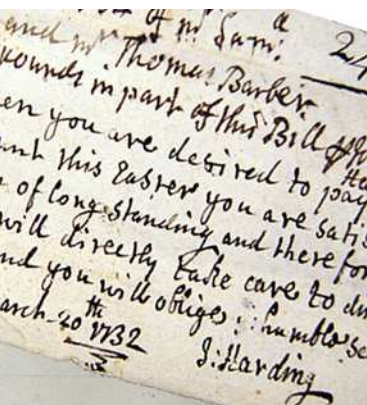
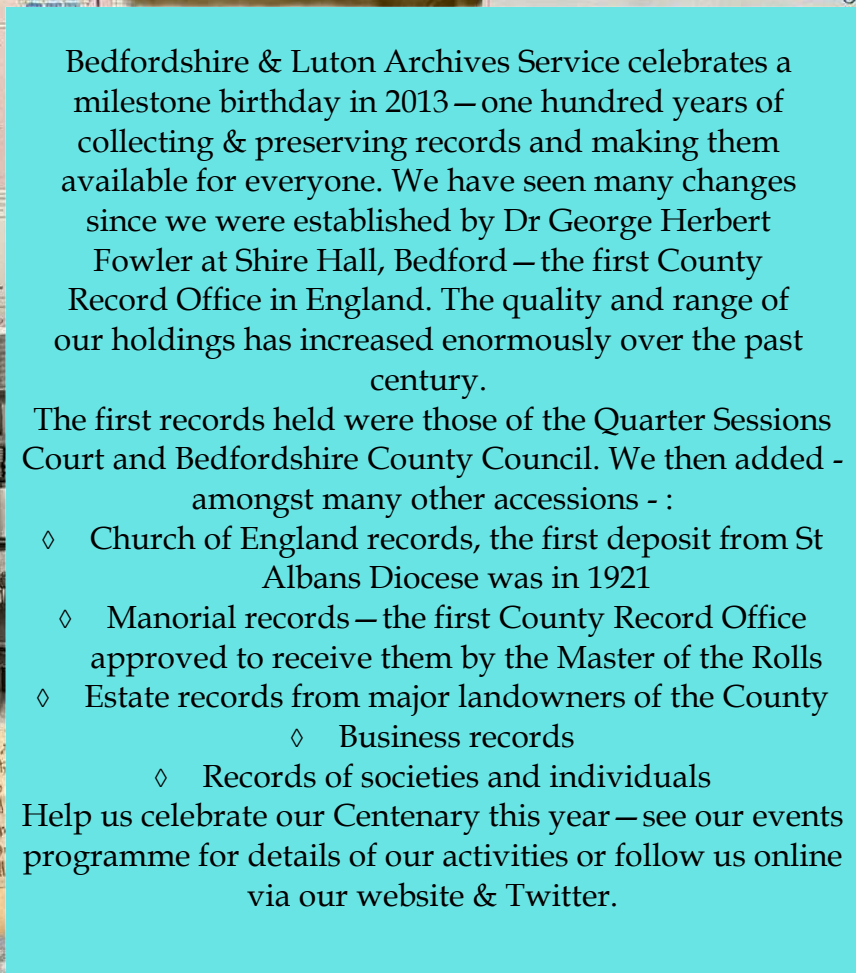
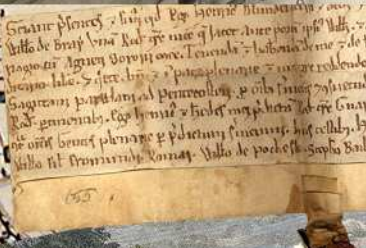
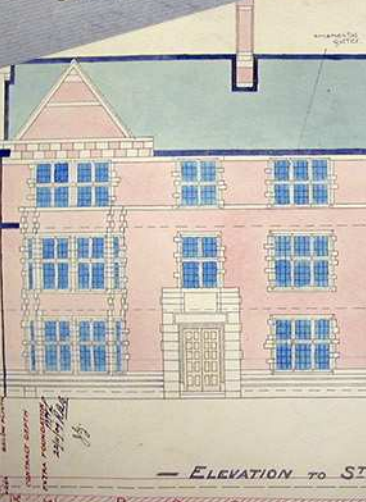
That in future the County Muniment Rooms shall be called "The County Record Office".

Bedfordshire & Luton Archives Service celebrates a milestone birthday in 2013 – one hundred years of collecting & preserving records and making them available for everyone. We have seen many changes since we were established by Dr George Herbert Fowler at Shire Hall, Bedford – the first County Record Office in England. The quality and range of our holdings has increased enormously over the past century.

The first records held were those of the Quarter Sessions Court and Bedfordshire County Council. We then added - amongst many other accessions - :

- ◇ Church of England records, the first deposit from St Albans Diocese was in 1921
- ◇ Manorial records – the first County Record Office approved to receive them by the Master of the Rolls
- ◇ Estate records from major landowners of the County
 - ◇ Business records
 - ◇ Records of societies and individuals

Help us celebrate our Centenary this year—see our events programme for details of our activities or follow us online via our website & Twitter.



the County Muniment Rooms
Record Office".

Herbert Fowler



New Collections and Catalogues 2012

The Archives Service takes in hundreds of documents each year, some adding to existing collections, others comprising brand new archives. We sort, clean, repackage, list and index the documents. Anyone can then view the catalogue descriptions online via the 'Search our Catalogues' link from our website and use the documents for their research by visiting our public searchroom, ordering copies, or commissioning us to undertake research for them.

As the oldest record office in the country we have lists dating back over the past century. Sometimes renewed interest in particular subjects leads us to revisit collections and revise and expand the catalogue descriptions to enable greater access to the valuable information they contain.

Listed below are the collection references, brief descriptions and dates of just some of the new and revised records we have catalogued this year:

Transport, Business & Industry: Z997 - Dirigible - Journal of the Airship Museum 1989-2012 ; Z1245 Company history and plans of machinery & buildings of Muntona Limited, Bedford c.1920s - 1950s; X843/16 Funeral Ledgers of T & E Neville, undertakers, Luton 1905 - 1929; X1485 Ledger of Stanley Litchfield, blacksmith of Riseley 1933 - 1965; Z1516 Luton News Almanac 1910 - 1915; Z1496 Photographs of Bedford Transmission Station 1961; Z41/Bed1 Photographs of English Electric Company Machinery at Bedford Brick Company c.1935; Z41/MV4 & Z41/F8 Photographs of Marston Valley Brickworks & Forders brickworks c.1930s.

Clubs & Societies: Z1504 Luton Camera Club 1898 - 1972.

Charities: X174/17 Details of the 80 apprentices assisted by Wilkes Charity, Leighton Buzzard 1839-1903 (right) are now fully transcribed and available online as are nearly one hundred boys admitted to Alderman Newton's Charity school, Bedford from 1845 - early 20th C listed in ref. ST1550.

Families & Individuals:

Two Luton family collections Z1513 Methley family 1936 - 1964; Z1526 Mann family 1936-1965.

Buildings & Land Use: R6/5/12 31 Deeds of the Swan Hotel & Castle Close, Bedford 1587 - 1787; R6/5/13 Twelve deeds for land on the east side of Bedford High Street 1782 - 1838; MN15 22 deeds relating to The Cricketers public house at Eaton Bray 1758 - 1883; MN36 Thirty deeds of Chaul End farm, Caddington; Z1510 Eighteen sale catalogues for properties in the County to be sold by auction, 1885 - 1960; Z1495 Deeds to land in King Street, Luton 1863.

Manors: R8/14 Court Rolls of the Manor of Cople Rowlands 1312 - 1609; R8/22 Goldington Manor 1603 & 1634; R8/5 Bedford Manor 1428 - 1694; R8/46 Ravensden Manor 1540 - 1703; R8 /68/1 Bailiffs Accounts for Haynes 1384 - 1397; Z1506 Toddington Manor Court Book 1876 - 1899.

Photographs & Illustrations; Z1229 A collection of 131 photographs of Shillington Village from the 19th - 20th Century; Z1244 85 watercolour paintings of Bedfordshire church monuments and fonts by Thomas Fisher c.1815; Z1523 Whitbread pub photographs 1954 - 1962.

Schools: Z1497 Photographs of Silver Jubilee Girls School, Bedford 1949 - 1957; Z1514 The Shell - magazine of Luton County Secondary Technical School & Old Scholars Association 1953 - 1955.

When appointed	name of Apprentice	age	name of Parent	To whom Apprenticed	Trade
1869					
May 3	Frank Telford	14	Thomas Telford	Mrs Elizabeth Sharpe	Whitcomb Builder.
2 " "	William Munday	14	Sarah Munday	Mr George Garside Leighton Buzzard.	

Commence- ment of Term	Years	Amount of Premium	how paid	Observations.
1869	6 yrs +	20	1869	1870 1.19.10
Apr 15	7 mos		1870	1871 0.17.2
1869			1871	1872 1.7.6
Oct 1	6 years	20	1870	1873 3.8.8
			1871	1874 4.14.6
			1872	1875 12.7.8
			1873	1876 1.13.6
			1874	1877 1.19.6
			1875	1878 2.1.6
			1876	1879 4.1.6
			1877	1880 4.1.6
			1878	1881 4.1.6
			1879	1882 4.1.6
			1880	1883 4.1.6
			1881	1884 4.1.6
			1882	1885 4.1.6
			1883	1886 4.1.6
			1884	1887 4.1.6
			1885	1888 4.1.6
			1886	1889 4.1.6
			1887	1890 4.1.6
			1888	1891 4.1.6
			1889	1892 4.1.6
			1890	1893 4.1.6
			1891	1894 4.1.6
			1892	1895 4.1.6
			1893	1896 4.1.6
			1894	1897 4.1.6
			1895	1898 4.1.6
			1896	1899 4.1.6
			1897	1900 4.1.6
			1898	1901 4.1.6
			1899	1902 4.1.6
			1900	1903 4.1.6
			1901	1904 4.1.6
			1902	1905 4.1.6
			1903	1906 4.1.6
			1904	1907 4.1.6
			1905	1908 4.1.6
			1906	1909 4.1.6
			1907	1910 4.1.6
			1908	1911 4.1.6
			1909	1912 4.1.6
			1910	1913 4.1.6
			1911	1914 4.1.6
			1912	1915 4.1.6
			1913	1916 4.1.6
			1914	1917 4.1.6
			1915	1918 4.1.6
			1916	1919 4.1.6
			1917	1920 4.1.6
			1918	1921 4.1.6
			1919	1922 4.1.6
			1920	1923 4.1.6
			1921	1924 4.1.6
			1922	1925 4.1.6
			1923	1926 4.1.6
			1924	1927 4.1.6
			1925	1928 4.1.6
			1926	1929 4.1.6
			1927	1930 4.1.6
			1928	1931 4.1.6
			1929	1932 4.1.6
			1930	1933 4.1.6
			1931	1934 4.1.6
			1932	1935 4.1.6
			1933	1936 4.1.6
			1934	1937 4.1.6
			1935	1938 4.1.6
			1936	1939 4.1.6
			1937	1940 4.1.6
			1938	1941 4.1.6
			1939	1942 4.1.6
			1940	1943 4.1.6
			1941	1944 4.1.6
			1942	1945 4.1.6
			1943	1946 4.1.6
			1944	1947 4.1.6
			1945	1948 4.1.6
			1946	1949 4.1.6
			1947	1950 4.1.6
			1948	1951 4.1.6
			1949	1952 4.1.6
			1950	1953 4.1.6
			1951	1954 4.1.6
			1952	1955 4.1.6
			1953	1956 4.1.6
			1954	1957 4.1.6
			1955	1958 4.1.6
			1956	1959 4.1.6
			1957	1960 4.1.6
			1958	1961 4.1.6
			1959	1962 4.1.6
			1960	1963 4.1.6
			1961	1964 4.1.6
			1962	1965 4.1.6
			1963	1966 4.1.6
			1964	1967 4.1.6
			1965	1968 4.1.6
			1966	1969 4.1.6
			1967	1970 4.1.6
			1968	1971 4.1.6
			1969	1972 4.1.6
			1970	1973 4.1.6
			1971	1974 4.1.6
			1972	1975 4.1.6
			1973	1976 4.1.6
			1974	1977 4.1.6
			1975	1978 4.1.6
			1976	1979 4.1.6
			1977	1980 4.1.6
			1978	1981 4.1.6
			1979	1982 4.1.6
			1980	1983 4.1.6
			1981	1984 4.1.6
			1982	1985 4.1.6
			1983	1986 4.1.6
			1984	1987 4.1.6
			1985	1988 4.1.6
			1986	1989 4.1.6
			1987	1990 4.1.6
			1988	1991 4.1.6
			1989	1992 4.1.6
			1990	1993 4.1.6
			1991	1994 4.1.6
			1992	1995 4.1.6
			1993	1996 4.1.6
			1994	1997 4.1.6
			1995	1998 4.1.6
			1996	1999 4.1.6
			1997	2000 4.1.6
			1998	2001 4.1.6
			1999	2002 4.1.6
			2000	2003 4.1.6
			2001	2004 4.1.6
			2002	2005 4.1.6
			2003	2006 4.1.6
			2004	2007 4.1.6
			2005	2008 4.1.6
			2006	2009 4.1.6
			2007	2010 4.1.6
			2008	2011 4.1.6
			2009	2012 4.1.6
			2010	2013 4.1.6
			2011	2014 4.1.6
			2012	2015 4.1.6
			2013	2016 4.1.6
			2014	2017 4.1.6
			2015	2018 4.1.6
			2016	2019 4.1.6
			2017	2020 4.1.6
			2018	2021 4.1.6
			2019	2022 4.1.6
			2020	2023 4.1.6
			2021	2024 4.1.6
			2022	2025 4.1.6
			2023	2026 4.1.6
			2024	2027 4.1.6
			2025	2028 4.1.6
			2026	2029 4.1.6
			2027	2030 4.1.6
			2028	2031 4.1.6
			2029	2032 4.1.6
			2030	2033 4.1.6
			2031	2034 4.1.6
			2032	2035 4.1.6
			2033	2036 4.1.6
			2034	2037 4.1.6
			2035	2038 4.1.6
			2036	2039 4.1.6
			2037	2040 4.1.6
			2038	2041 4.1.6
			2039	2042 4.1.6
			2040	2043 4.1.6
			2041	2044 4.1.6
			2042	2045 4.1.6
			2043	2046 4.1.6
			2044	2047 4.1.6
			2045	2048 4.1.6
			2046	2049 4.1.6
			2047	2050 4.1.6
			2048	2051 4.1.6
			2049	2052 4.1.6
			2050	2053 4.1.6
			2051	2054 4.1.6
			2052	2055 4.1.6
			2053	2056 4.1.6
			2054	2057 4.1.6
			2055	2058 4.1.6
			2056	2059 4.1.6
			2057	2060 4.1.6
			2058	2061 4.1.6
			2059	2062 4.1.6
			2060	2063 4.1.6
			2061	2064 4.1.6
			2062	2065 4.1.6
			2063	2066 4.1.6
			2064	2067 4.1.6
			2065	2068 4.1.6
			2066	2069 4.1.6
			2067	2070 4.1.6
			2068	2071 4.1.6
			2069	2072 4.1.6
			2070	2073 4.1.6
			2071	2074 4.1.6
			2072	2075 4.1.6
			2073	2076 4.1.6
			2074	2077 4.1.6
			2075	2078 4.1.6
			2076	2079 4.1.6
			2077	2080 4.1.6
			2078	2081 4.1.6
			2079	2082 4.1.6
			2080	2083 4.1.6
			2081	2084 4.1.6
			2082	2085 4.1.6
			2083	2086 4.1.6
			2084	2087 4.1.6
			2085	2088 4.1.6
			2086	2089 4.1.6
			2087	2090 4.1.6
			2088	2091 4.1.6
			2089	2092 4.1.6
			2090	2093 4.1.6
			2091	2094 4.1.6
			2092	2095 4.1.6
			2093	2096 4.1.6
			2094	2097 4.1.6
			2095	2098 4.1.6
			2096	2099 4.1.6
			2097	2100 4.1.6
			2098	2101 4.1.6
			2099	2102 4.1.6
			2100	2103 4.1.6
			2101	2104 4.1.6
			2102	2105 4.1.6
			2103	2106 4.1.6
			2104	2107 4.1.6
			2105	2108 4.1.6
			2106	2109 4.1.6
			2107	2110 4.1.6
			2108	2111 4.1.6
			2109	2112 4.1.6
			2110	2113 4.1.6
			2111	2114 4.1.6
			2112	2115 4.1.6
			2113	2116 4.1.6
			2114	2117 4.1.6
			2115	2118 4.1.6

Group Visits – Luton Irish Forum and Garden History Group

In October we welcomed a group of volunteers from the Luton Irish Forum who are working on the Our Heritage project 'Catching the Boat'. The project seeks to record memories of the working life of Irish immigrants in Luton between 1940 and 1960. As part of the project the group will be collating an archive of new and existing materials. Realising that this was something they knew little about they asked the Archives Service to arrange a training day for them. We organised the day as an introduction to collecting, preserving and providing access to records. We started by looking at what should be collected, both in terms of content and format – on paper or purely digital; would it be documents, pictures or oral history? After this we considered data protection, copyright, storage and preservation, how to arrange and catalogue a collection, and finally how access to the archived material could be provided. Nearly all the participants were completely new to dealing with archives and it was a very full programme to tackle in a day but the feedback was positive and we were told that we had 'definitely given them something to think about'.



Members of Luton Irish Forum at BLARS



In November we hosted another group visit. This time the participants were from a local adult education class on garden history. They came to see original examples of some of the most useful sources for their subject. We have lots of good material for researching garden history, which is a particularly popular topic, and have produced some guides which are downloadable from our website:

<http://www.tinyurl.com/blarsgardenhistory>

Group visits to the office can be arranged during the day on Thursdays, from 5-7pm Tuesday, Wednesday or Friday, or from 7-9 pm on Mondays. We normally show people 'behind the scenes' explaining how the service works, and put on a small display of documents specially selected for the group. Parties should consist of between 10 – 20 people. We have to make a charge for this

service, but will always do our best to tailor the programme and examples we use to meet each group's specific requirements. We are unable to offer document production or normal searchroom facilities during visits, but can explain the process so that participants have a head start when they return to the service another day. If your group that would like to arrange a visit to the office please contact us:

e-mail: archive@bedford.gov.uk or 01234 228833 <http://www.tinyurl.com/blarsgroupvisits>

Join us for Bedfordshire & Luton Archives Service Quiz Night on 23 May 2013



Help us celebrate our 100th birthday by taking part in our fund raising quiz night, kindly hosted by the Marston Vale Trust.

The Quiz will take place on Thursday 23rd May 2013, at the Forest Centre in Marston Moretaine, and proceeds will be shared between the Archives Service and the Marston Vale Trust. Funds raised will support our new cataloguing and conservation projects. The Marston Vale Trust is the largest environmental regeneration project in Bedfordshire, creating new woodlands across 61 square miles between Bedford and Milton Keynes. All monies raised go towards creating the forest, and making Bedfordshire greener.

Teams of up to six will battle it out over several rounds of questions – some with a Bedfordshire flavour. Come along and support us in our centenary year! You may even win a prize in our raffle!

To enter a team, please contact Laura Johnson, Customer Service Officer on 01234 228833 or

archive@bedford.gov.uk.

Closing date to register a team: Friday 26 April 2013.

Time: 7pm to 11pm.

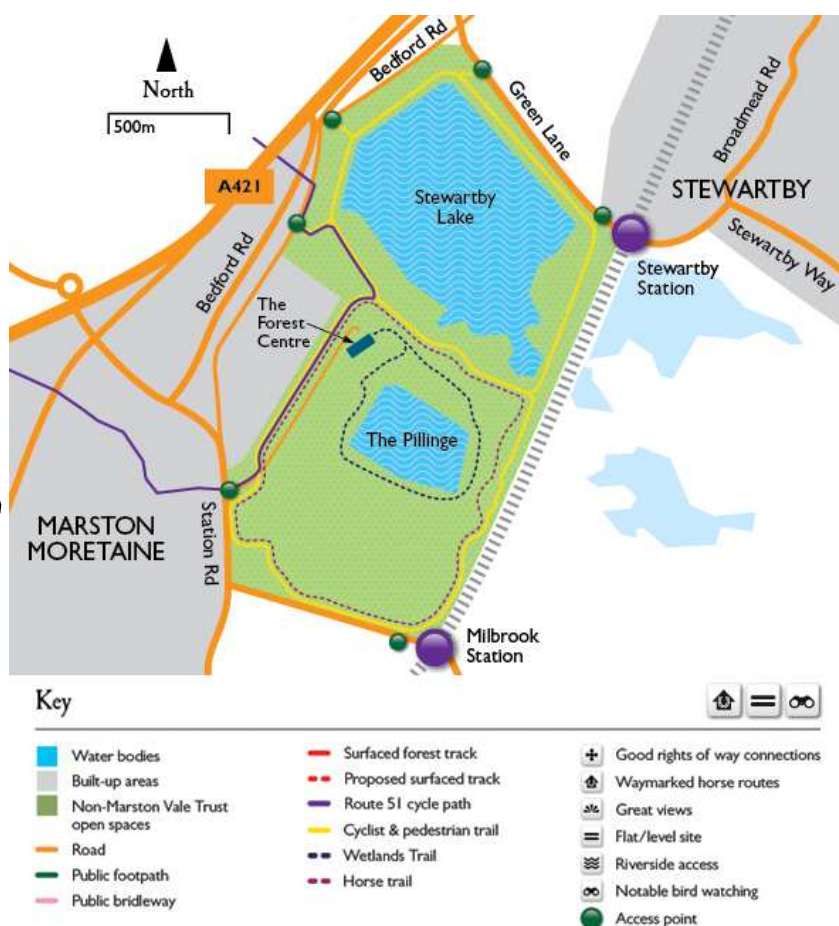
Tickets: £5 per person, payable in advance.

Raffle.

Full Bar.

Refreshments available to purchase.

We hope to see you there!



This newsletter is edited by Susan Edwards, who welcomes ideas and material for future issues. Published by Beds & Luton Archives and Records Service, Riverside Building, Borough Hall, Bedford, MK42 9AP.

Tel: (01234) 228833

E-mail: archive@bedford.gov.uk. Website: www.bedford.gov.uk/archive



<http://twitter.com/#!/BedsArchives>



Bedfordshire & Luton Archives & Records Service
Jointly funded by Bedford Borough Council, Central Bedfordshire Council & Luton Borough Council



BEDFORD
BOROUGH COUNCIL

