

BARS  
LSP #007

# *Adventures in Time*

Local Study Starter Pack  
**Bedford Town Centre and  
Goldington**



BEDFORD  
BOROUGH COUNCIL

Central  
Bedfordshire



Supported by

**The National Lottery**<sup>®</sup>

through the Heritage Lottery Fund

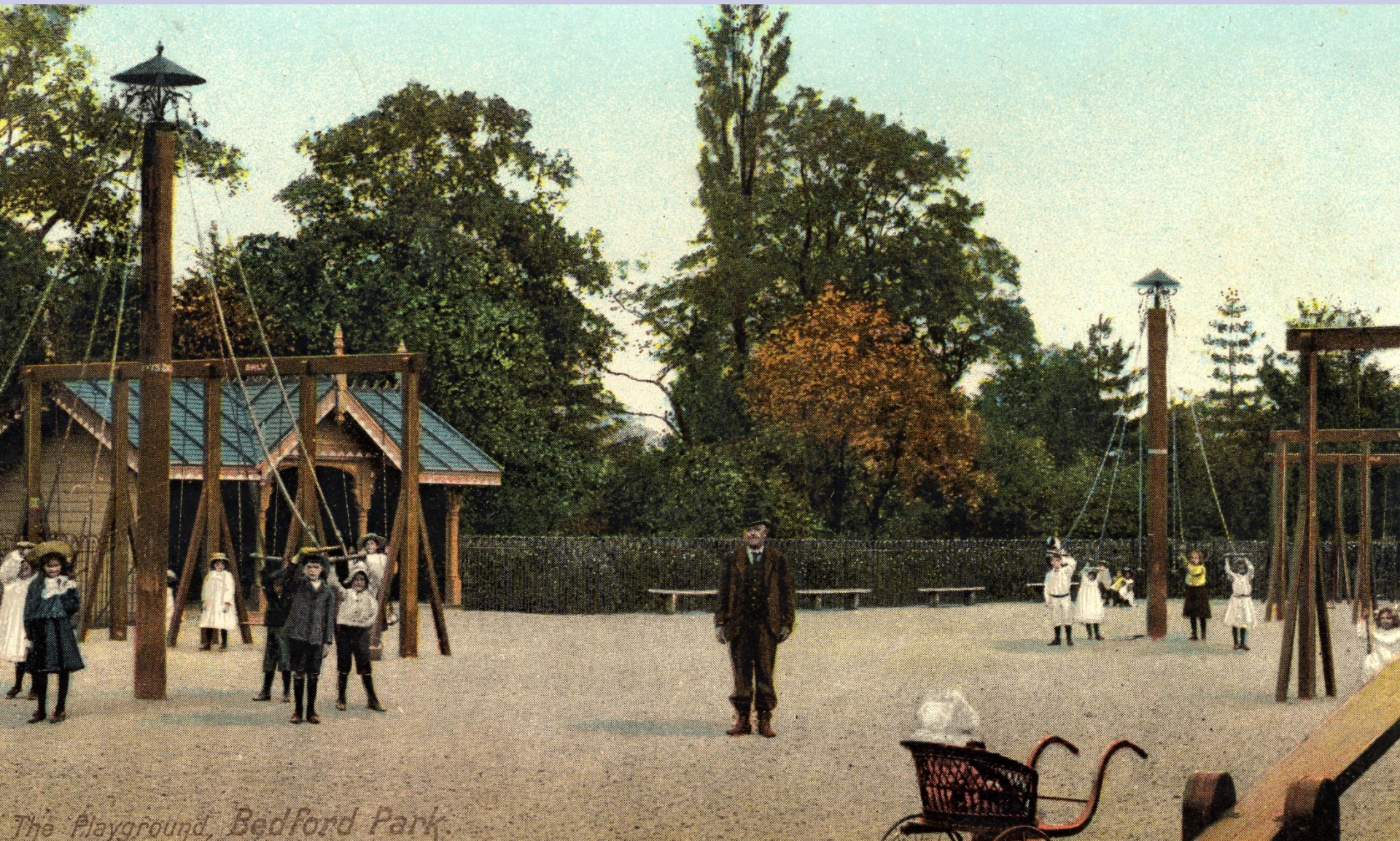




*The Promenade and River,  
Bedford*

75519 (J.V.)

*Image 1*



*The Playground, Bedford Park.*

*Image 2*



Image 3



23446 Bedford. St. Paul's Square.



23477 Bedford. Silver Street.

Image 5



ST. PAUL'S CHURCH & SQUARE, BEDFORD.

Z16239 (W)

Image 6

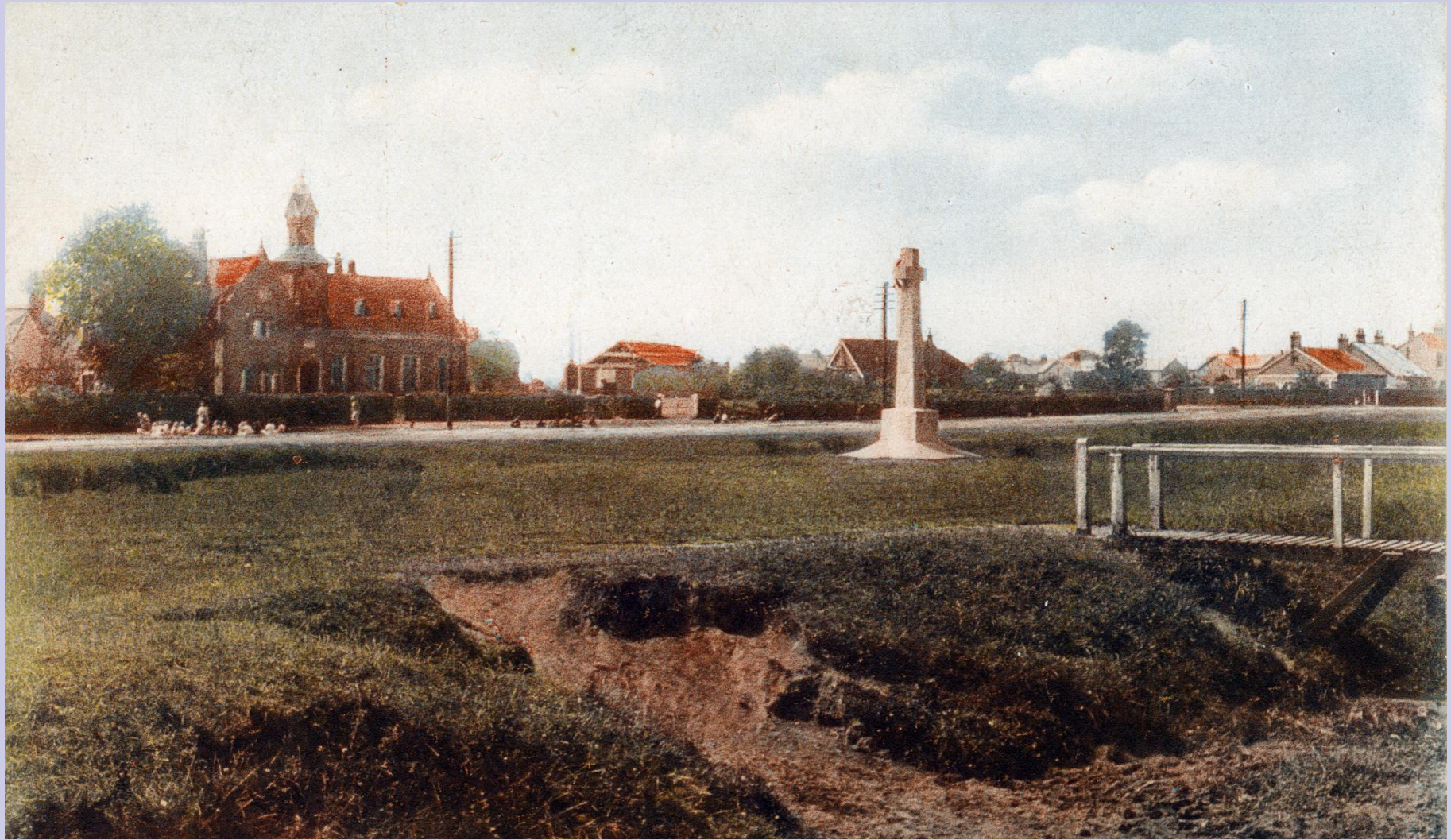


Image 7





Image 8



Image 9



*The Old Gate in Bedford Bridge*

Image 10



Image 11



Image 12



Girls Modern School, Bedford



Image 14

232



These Armes are of ancientt belonginge and apperteyninge  
to the Towne and Borough of Bedford by me out of mynde

Witt: Henry alle clarencie  
King of Armes



These Armes here depicted are belonginge and apperteyninge to the same Bayliffe  
George Nee and Comynallie of the towne and borough of Bedford. Whiche Armes &  
Clarencie charge of Armes of the Countie of Bedford & severall parties of England have not only  
watched & maintained the same unto the Maier Bayliffe of Burgesse & Comynallie of the towne and  
borough of Bedford, but also recorded the same, in the register of my Negociation made out in  
the countie of Bedd. And at this first Negociation was Robert Sparadine Mayor, John Caproue  
Justice recorder, Henry Albany, Thomas Dege, William Bull, Duff and Lamerre, Humphrey  
Lawrence, Symonde Berbeck and Henry Under Gynere assistants to the said Mayor  
who have ben mayors, Edward Emstye and Robert Goddall Bayliffe, George Wyoley and  
William Dade Shamblynges. In wch the record of these Armes is made by my name the  
twente of June 1568.

Witt: Henry alle clarencie  
King of Armes





Image 16



Bedford Castle at the time of the Great Siege, 1224.



*Arcade, Bedford*

Valentines Series

47119



Image 19



*Image 20*